

METODE PENELITIAN TRANSPORTASI

MSTT – DTSL – FT – UGM

1

PERTEMUAN 7

MENCARI DAN
MEMAHAMI ARTIKEL
DI JURNAL

MUHAMMAD ZUDHY IRAWAN

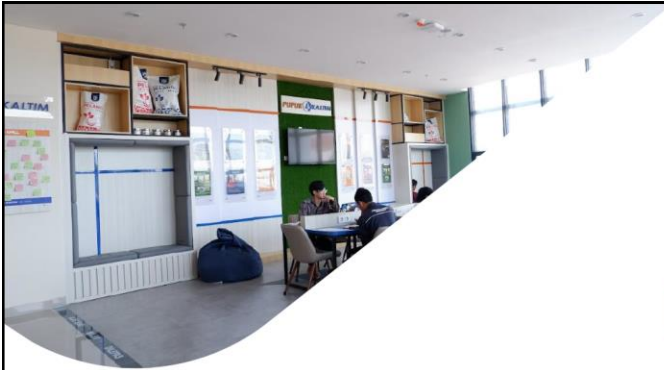


Watching
netflix
whole day



Reading a
manuscript
for 10
minutes

2



- Penulisnya OK
- Isinya OK
- Kebaruannya OK
- Penerbitnya OK
- Dampaknya OK

Menemukan paper terbaik

3

Paper aneh?

Received December 12, 2020, accepted January 5, 2021, date of publication January 8, 2021, date of current version January 10, 2021.
 Digital Object Identifier 10.1109/ACCESS.2021.3050420

Integrated Fuzzy Based Computational Mechanism for the Selection of Effective Malicious Traffic Detection Approach

SULTAN H. ALMOTIRI¹

Computer Science Department, College of Computer and Information Science, Umm Al-Qura University, Makkah 21955, Saudi Arabia
 e-mail: shmotiri@uqu.edu.sa

This work was supported by the King Abdul Aziz City for Science and Technology (KACST), under Grant 14-INF727-10.

ABSTRACT A mechanism to effectively detect malicious traffic in the present context where new cyber criminals: overwhelmed of trustworthiness of digital technologies, use of digital technologies done by a detection are typical and cannot algorithmically known tra malicious. This paper has used the Fuzzy AHP methodology which is designed to address the issues related to the vagueness, uncertainties and total awareness of languages. In addition, the Technique for Order Preference by Similarity

IEEE Access

Multidisciplinary | Rapid Review | Open Access Journal

lers use
 number
 rvasive
 fficient
 can be
 : traffic
 systems
 failure
 ntional
 al well-
 nificant
 author

4

Paper aneh?

International Journal of Mechanical & Mechatronics Engineering IJMMME-DENS Vol.10 No.01

2010

Temperature Profile and Thermocline Thickness Evaluation of a Stratified Thermal Energy Storage Tank

Joko Wahyo⁽¹⁾ and M Amin A Majid⁽²⁾

Abstract— Determination of thermocline thickness requires a continuous profile of temperature distribution. Difficulty in determining thermocline thickness arises for the case of discrete temperature data, since the profile formed could not be used to estimate the thermocline thickness. This paper discusses a practical method for formulation of thermocline thickness of stratified thermal energy storage. Curve fitting by iterative method was adopted to identify the functions which could represent the S-curve of temperature distribution. Based on the functions, thermocline thickness was formulated using functional relationship of temperature profile. Results identified two functions which could represent S-curve of temperature distribution, namely sigmoidal response (SDR) and four parameter sigmoid (FPS) functions. Both functions were observed to well fit the temperature distributions having coefficient determination more than 0.99. Based on evaluations the formulations were capable to be utilized for evaluation of thermocline thickness of the stratified TES. The methods offer an advantage to obtain an exact value of thermocline thickness.

Index Term— temperature distribution profile, thermocline thickness, Stratified thermal energy storage.

Using continuous profile, thermocline thickness is accurately identified as asymptote regions with limit points located on the edge of profiles [5, 6, 7, 8, 9]. The difficulties of measuring thermocline thickness arise if the temperature is available as a discrete data resulted from long interval-distance of temperature sensors. The un-continuous profiles that are formed could not be used to determine the thermocline thickness due to its ambiguity in defining the limit points. A method to determine thermocline thickness from discrete data of temperature distribution is investigated in this study. The study focuses on developing an approach of establishing the profile by adopting fitting method and using the profile to formulate the thermocline thickness. Data acquired from an operating TES tank equipped with long interval-distance sensors recorded based on hourly basis, was used in this study.

II. METHODOLOGY

Normally water temperature distribution in the stratified TES tank consists of 3 regions with warm water at the top,

5

Paper aneh?

JLSB

Journal of
Life Science and Biomedicine

J. Life Sci. Biomed. 2(4): 167-177, 2012

© 2011, Scienceline Publication

ISSN 2251-9939



Original Article

Effect of Methane Emission from Fertilizer Application

ABSTRACT

Agriculture is a major source of greenhouse gas. Despite what many might think, the effect of greenhouse gas emission from fertilizer application is well known across hundreds of nations all over the world. This effect from fertilizer application has been around for several centuries and has a very important meaning in the lives of many. It would be safe to assume that effect of methane emission from fertilizer application is going to be around for a long time and have an enormous impact on the lives of many people in Indonesia. About 85% of Indonesian workers are engaged in agriculture, which accounts for 3% of GDP in 2001. Some 91 million ha (76.6 million acres) are under cultivation, with 35% to 40% of the cultivated land devoted to the production of export crops. Some 80% of the country's cultivated land is in Java. This study calculated the greenhouse effects from fertilizer application, in the term of global warming potential (GWP) associated with CH₄ emissions in Indonesian croplands. The results show that the GWP of CH₄ emissions was 223.456Tg CO₂-eq yr⁻¹ during year 2009.

Keywords: Indonesia, urea, rice, coconut, social economic, global warming

African Journal of Agricultural Research Vol. 7(26), pp. 4038-4044, 24 July, 2012
Available online at <http://www.academicjournals.org/AJAR>
DOI: 10.5897/AJAR.12.148
ISSN 1991-837X ©2012 Academic Journals

Full Length Research Paper

Mapping Indonesian paddy fields using multiple-temporal satellite imagery

Accepted 22 June, 2012

There is a growing demand for rice with increase in population. As rice is still the major staple food in Indonesia, the task of increasing rice production continues to engage the attention of national planners. Various methods used in estimating rice areas can provide information periodically through different information satellite data, which have a wide coverage area, and can be used as a source of information on the condition of rice areas. This study has an objective of using multi-temporal satellite imagery from the Moderate Resolution Imaging Spectrometer (MODIS) to map the Indonesian rice paddies area. The algorithm was based on temporal profiles of vegetation strength and water content, using electromagnetic surface reflectance in visible to near infrared range. The results obtained from the analysis were compared to national statistics. Estimated Indonesian regional rice area was 8.27 million ha, which agrees with published values. The model performance was dependent on rice ecosystems. Good linear relationships between the model results and the national statistics were observed for all types of rice fields.

Key words: Geographic information system (GIS), satellite data, moderate resolution imaging spectrometer (MODIS), rice, paddy field, remote sensing.

6

Ternyata Dikutip di beberapa paper

Mapping Indonesian paddy fields using multiple-temporal satellite imagery

N Lee, A Monica, I Daratista - African Journal of Agricultural ..., 2012 - academia.edu

There is a growing demand for rice with increase in population. As rice is still the major staple food in Indonesia, the task of increasing rice production continues to engage the attention of national planners. Various methods used in estimating rice areas can provide information periodically through different information satellite data, which have a wide coverage area, and can be used as a source of information on the condition of rice areas. This study has an objective of using multi-temporal satellite imagery from the Moderate ...

☆ Simpan Kutip Dikutip 5 kali Artikel terkait 4 versi

Effect of methane emission from fertilizer application

L Nono, I Daratista, A Monica - Journal of Life Science and ..., 2012 - jsb science-line.com

Agriculture is a major source of greenhouse gas. Despite what many might think, the effect of greenhouse gas emission from fertilizer application is well known across hundreds of nations all over the world. This effect from fertilizer application has been around for several centuries and has a very important meaning in the lives of many. It would be safe to assume that effect of methane emission from fertilizer application is going to be around for a long time and have an enormous impact on the lives of many people in Indonesia. About 85% of ...

☆ Simpan Kutip Dikutip 3 kali Artikel terkait 4 versi

EDVHOL 2024, 10-27.

Hochreiter, S., Schmidhuber, J., 1997. Long short-term memory. *Neural Comput.* 9, 1735-1780.

Inoue, Y., Kurosu, T., Maeno, H., Uratsuka, S., Kozu, T., Dabrowska-Zielinska, K., Qi, J., 2002. Season-long daily measurements of multifrequency (Ka, Ku, X, C, and L) and full-polarization backscatter signatures over paddy rice field and their relationship with biological variables. *Remote Sens. Environ.* 81, 194-204.

Kontgis, C., Schneider, A., Ozdogan, M., 2015. Mapping rice paddy extent and intensification in the Vietnamese Mekong River Delta with dense time stacks of Landsat data. *Remote Sens. Environ.* 169, 255-269.

Yan, C., Knaue, K., 2013. Remote sensing of rice crop areas. *Int. J. Remote Sens.* 34, 2101-2139.

Lee, N., Monica, A., Daratista, I., 2012. Mapping Indonesian paddy fields using multiple-temporal satellite imagery. *Afr. J. Agric. Res.* 7, 4038-4044.

Janumart, K.R., More, R.S., Jain, N.K., Panigrahy, S., Parihar, J.S., 2015. Mapping of rice-cropping pattern and cultural type using remote-sensing and ancillary data: a case study for South and Southeast Asian countries. *Int. J. Remote Sens.* 36, 6008-6030.

McCloy, K.R., Smith, F.R., Robinson, M.R., 1987. Monitoring rice areas using LANDSAT MSS data. *Int. J. Remote Sens.* 8, 741-749.

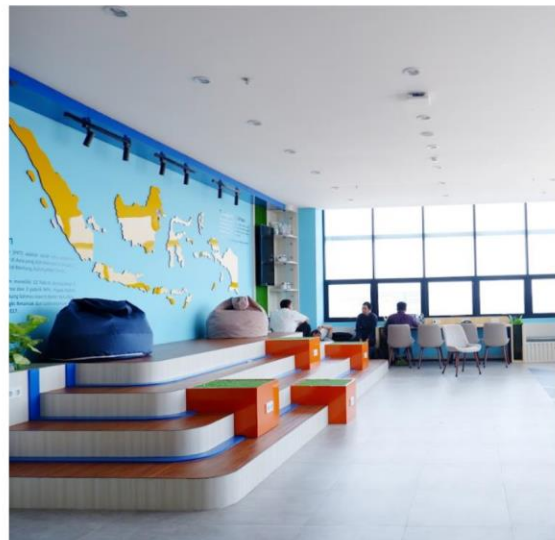
Mladenova, I.E., Jackson, T.J., Bindlish, R., Hensley, S., 2013. Incidence angle normalization of radar backscatter data. *IEEE Trans. Geosci. Remote Sens.* 51, 1791-1804.

Mosleh, M.K., Hassan, Q.K., Chowdhury, E.H., 2015. Application of remote sensors in mapping rice area and forecasting its production: a review. *Sensors (Switzerland)* 15, 769-791.

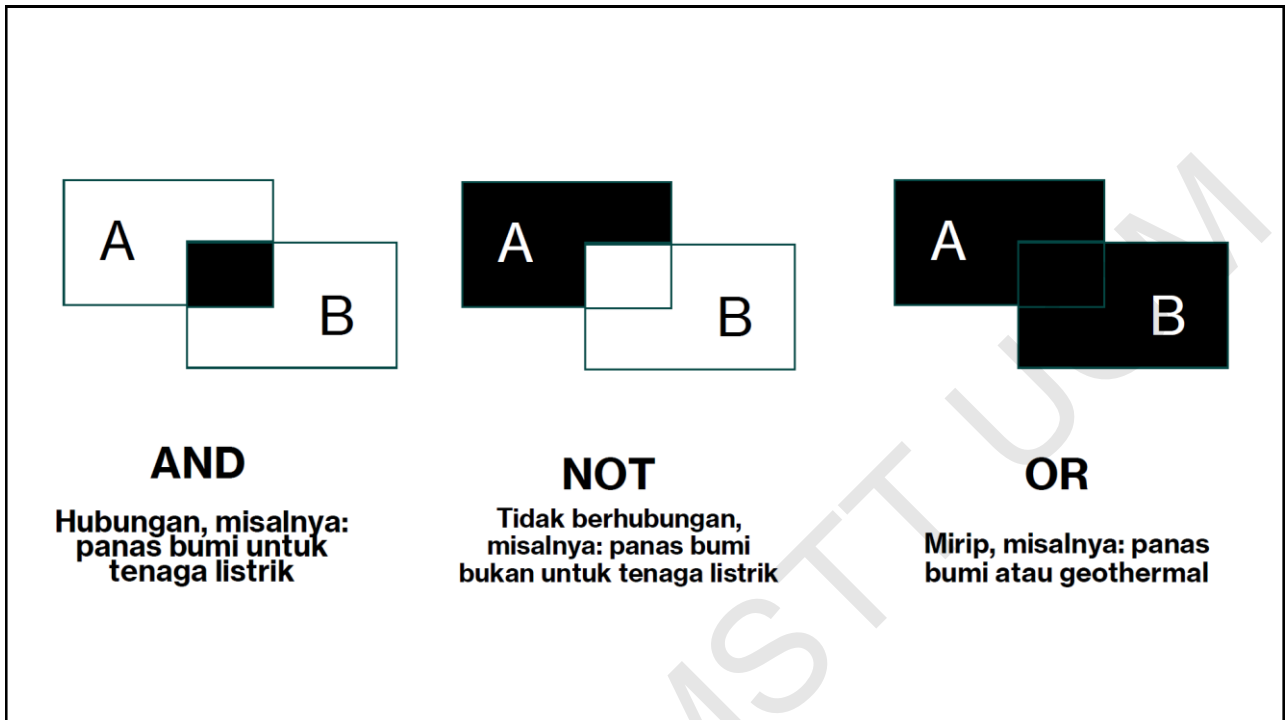
7

Bagaimana caranya?

1. Tentukan fokus research question
2. Tentukan konsep kunci berdasar research question
3. Cari sinonim, akronim, atau istilah yang mirip dari tiap konsep
4. Gabung tiap istilah dari konsep yang sama dengan OR
5. Gabung konsep yang berbeda dengan AND



8



9

Bagaimana efek pemanasan global pada pertanian?


	Konsep 1	Konsep 2	Konsep 3
Key concepts	Pertanian	Pemanasan global	
Konsep similar	agriculture farming	global warming climate change climate crisis global climate change climate warming atmospheric warming climatic warming	

(agriculture OR farming)

AND

(“global warming” OR “climate change” OR “climate crisis”)

10



Search Template

Focused Research Question	What is the effectiveness of fish oil or omega-3 fatty acids in patients with dementia?		
Research articles that are highly relevant to your research topic			

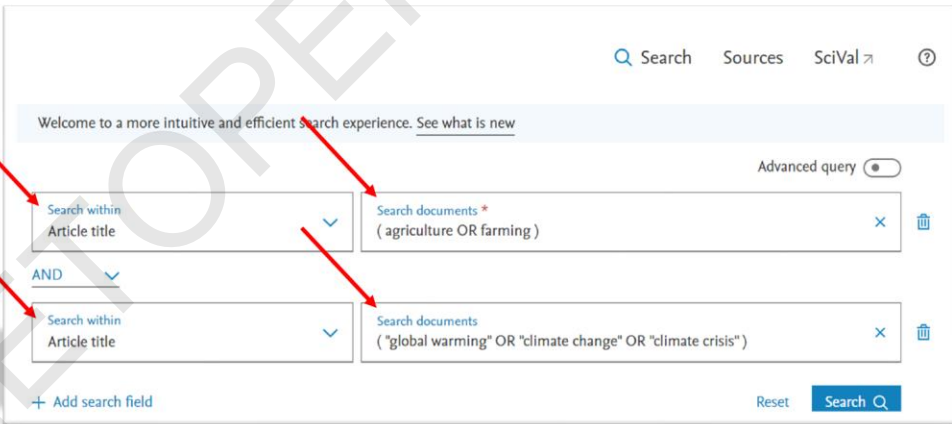
- Identify free text terms and controlled vocabulary terms for each concept.
- Combine search terms within each concept with Boolean Operator **OR**
- Combine different concepts with Boolean Operator **AND**

	Concept 1 /Population/Problem	Concept2 /Intervention/Exposure	Additional concept (if any) /comparison/outcome
Key concepts <i>Identify the key concepts based on your research topic.</i>	patients with dementia	fish oil or omega-3	
Free text terms / natural language terms (synonyms, UK/US terminology, medical/laymen's terms, acronyms/abbreviations, drug brands, more narrow search terms) <i>List down your keywords for each concept.</i>	Dementia Dementias Alzheimer Alzheimer's Alzheimers Lewy Body Lewy bodies	Fish oil fish oils Omega-3 omega 3 Omega3 eicosapentanoic acid eicosapentanoic acids eicosapentaenoic acid eicosapentaenoic acids EPA	

The Art and Science of Searching in Systematic Reviews: Comprehensive Search Strategy
<https://learning.edx.org/course/course-v1:NUS+SSR001x+3T2021/home>

Sumber: NUS

11



Welcome to a more intuitive and efficient search experience. [See what is new](#)

Advanced query

Search within Article title Search documents * (agriculture OR farming)

AND

Search within Article title Search documents ("global warming" OR "climate change" OR "climate crisis")

+ Add search field Reset

Di database Scopus

12

Hasilnya

2,129 documents found [Analyze results](#)

All [Export](#) [Download](#) [Citation overview](#) [More](#) [Show all abstracts](#) [Sort by Date \(newest\)](#) [Grid](#) [List](#)

	Document title	Authors	Source	Year	Citations
<input type="checkbox"/> 1	Article • Open access Assessing the impact of climate change on flood inundation and agriculture in the Himalayan Mountainous Region of Bhutan	Syldon, P., Shrestha, B.B., Miyamoto, M., Tamakawa, K., Nakamura, S.	Journal of Hydrology: Regional Studies, 52, 101687	2024	0
	Show abstract View at Publisher Related documents				
<input type="checkbox"/> 2	Review Carbon removal and climate change mitigation by seaweed farming: A state of knowledge review	Pessarrodona, A., Howard, J., Pidgeon, E., Wernberg, T., Filbee-Dexter, K.	Science of the Total Environment, 918, 170525	2024	0
	Show abstract View at Publisher Related documents				
<input type="checkbox"/> 3	Article • Open access Tackling climate change through wastewater reuse in agriculture: A prioritization methodology	Penserini, L., Moretti, A., Mainardis, M., Cantoni, B., Antonelli, M.	Science of the Total Environment, 914, 169862	2024	0
	Show abstract				

13

Hasilnya

2,129 documents found [Analyze results](#)

All [Export](#) [Download](#) [Citation overview](#) [More](#) [Show all abstracts](#) [Sort by Cited by \(highest\)](#) [Grid](#) [List](#)

	Document title	Authors	Source	Year	Citations
<input type="checkbox"/> 1	Review • Open access The impacts of climate change on water resources and agriculture in China	Piao, S., Clais, P., Huang, Y., ...Zhang, T., Fang, J.	Nature, 467(7311), pp. 43–51	2010	2,659
	Show abstract View at Publisher Related documents				
<input type="checkbox"/> 2	Review • Open access Adapting agriculture to climate change	Howden, S.M., Soussana, J.-F., Tubiello, F.N., ...Dunlop, M., Meinke, H.	Proceedings of the National Academy of Sciences of the United States of America, 104(50), pp. 19691–19696	2007	1,378
	Show abstract View at Publisher Related documents				
<input type="checkbox"/> 3	Article The impact of global warming on agriculture: a Ricardian analysis	Mendelsohn, R., Nordhaus, W.D., Shaw, D.	American Economic Review, 84(4), pp. 753–771	1994	1,185
	Show abstract				

14

Mencari di mana?

- Database jurnal (Sciedirect, Springer, IEEE, dll)
- Database pengumpul (Ebsco, Proquest, Jstor, dll)
- Database pengindeks (Scopus, DOAJ, Google Scholar)



15

Publish or Perish

Google Scholar Profile search

Profile name: Find a profile... Anne-Wil Harzing - Professor of International Management - Middlesex University - Tilburg University

Profile ID: v0cDYGsAAAAJ "International Business" "International HRM" Scientometrics "International Management" Expatriation

GS Citation Profile search

Annual citations:

Year	1999	2000	2001	2002	2003	2004	2005	2006	2007	2008	2009	2010	2011	2012	2013	2014	2015	2016	2017	2018	2019
New	47	46	91	113	149	232	237	344	400	539	720	788	1018	1197	1262	1269	1488	1812	1784	1908	817
Total	380	426	517	630	779	1011	1248	1592	1982	2531	3251	4017	5035	6232	7594	8853	10441	12253	14017	15615	16432

Copy citations

Results

Publication years	Cites	Per year	Rank	Authors	Title	Year	Publication	Publisher	Type
1995-2020	h 849	70.75	1	AW Harzing	Publish or Perish	2007		http://www.ha...	Online document
Citation years: 24 (1995-2019)	h 764	76.40	2	NJ Adler, AW Harzing	When knowledge wins: Transcending the sense and nonsense of acad...	2009	The Academy of Management Learning...		Journal article
Papers:	h 708	64.36	3	AW Harzing, R van der...	Google Scholar as a new source for citation analysis?	2008	Ethics in Science and Environmental Po...		Journal article
Citations:	h 698	47.06	4	AW Harzing	Acquisitions versus greenfield investments: International strategy and m...	2002	Strategic Management Journal		Journal article
Classes/year:	h 589	37.00	6	AW Harzing	An empirical analysis and extension of the Bartlett and Ghoshal typology...	2000	Journal of International Business Studies		Journal article
Classes/paper:	h 530	26.50	8	AW Harzing	Response styles in cross-national survey research: A 26-country Study	2006	International Journal of Cross Cultural...		Journal article
h-index:	h 528	29.33	9	AW Harzing	Managing the multinationals: An international study of control mechanisms...	1999		Edward Elgar	Book
h-index:	h 479	53.22	10	AW Harzing, A Pinning...	Of bears, bumble-bees, and spiders: The role of expatriates in controlin...	2001	Journal of World Business		Journal article
h-index:	h 468	19.50	11	AW Harzing	International Human Resource Management	2010		Sage Publicat...	Book
h-index:	h 425	19.32	12	AW Harzing	The persistent myth of high expatriate failure rates	1995	The International Journal of Human Re...		Journal article
h-index:	h 422	26.38	13	AJ Feely, AW Harzing	Response rates in international mail surveys: results of a 22-country study	1997	International Business Review		Journal article
h-index:	h 408	25.60	14	AW Harzing, A Sarge	Language management in multinational companies	2003	Cross Cultural Management: An Intern...		Journal article
h-index:	h 394	21.89	15	AW Harzing	The relative impact of country of origin and universal contingencies on h...	2003	Organization Studies		Journal article
h-index:	h 370	31.33	16	M Puellan, AW Harzing	Who's in charge? An empirical study of executive staffing practices in for...	2001	Human Resource Management		Journal article
h-index:	h 368	36.90	17	N Hoorderhaven, AW...	Country-of-origin, localization, or dominance effect? An empirical invest...	2007	Journal of International Business Studies		Journal article
h-index:	h 338	37.56	18	AW Harzing	Knowledge-sharing and social interaction within MNEs	2009	Journal of International Business Studies		Journal article
h-index:	h 326	29.64	19	AW Harzing, AJ Feely	The publish or perish book	2010	Tarnia Software Research		Journal article
h-index:	h 320	32.00	20	AW Harzing, R van der...	The language barrier and its implications for HQ-subsidiary relationships	2008	Cross Cultural Management: An Intern...		Journal article
					A Google Scholar h-index for journals: An alternative metric to measure j...	2009	JASIST		Journal article

Copy Results

Save Results

16

Scopus search

Authors: a harzing

Years: 0 - 0

Search

Search Direct

Clear All

Revert

New

Results

Publication years: 1995-2019	Cites	Per year	Rank	Authors	Title	Year	Publication	Publisher	Type
Citation years: 24 (1995-2019)	412	41.20	1	N. Adler	When knowledge wins: Transcending the sense and nonsens...	2009	Academy of Management Learning and Education	Acad Management	Article
Papers: 87	327	29.73	2	A. Harzing	Google Scholar as a new source for citation analysis	2008	Ethics in Science and Environmental Politics	Wiley-Blackwell	Article
Citations: 6149	281	21.62	3	A. Harzing	Response styles in cross-national survey research: A 26-coun...	2006	International Journal of Cross Cultural Management	Elsevier Science Inc	Article
Cites/year: 256.21	250	13.89	4	A. Harzing	Of bears, bumble-bees, and spiders: The role of expatriates i...	2001	Journal of World Business	Wiley	Article
Authors/paper: 70.68	249	14.65	5	A. Harzing	Acquisitions versus greenfield investments: International strat...	2002	Strategic Management Journal	Elsevier Science Inc	Article
h-index: 1.00	242	11.00	6	A. Harzing	Response rates in international mail surveys: Results of a 22...	1997	International Business Review	Palgrave Macmillan Ltd	Article
g-index: 39	216	11.37	7	A. Harzing	An empirical analysis and extension of the Bartlett and Ghosh...	2000	Journal of International Business Studies	John Wiley & Sons Int	Article
N _{norm} : 39	209	8.71	8	A. Harzing	The persistent myth of high expatriate failure rates	1995	The International Journal of Human Resource Management	John Wiley & Sons Int	Article
N _{annual} : 1.63	208	13.00	9	A. Harzing	The relative impact of country of origin and universal contig...	2003	Organization Studies	Sage Publications Ltd	Article
Papers with ACC > 1.2,5,10,20: 70.65,47,24,4	186	11.63	10	A. Feely	Language management in multinational companies	2003	Cross Cultural Management: An International Journal	Wiley Periodicals, Inc	Article
Copy Results	186	15.50	11	M. Pudielko	Country-of-origin, localization, or dominance effect? An empl...	2007	Human Resource Management	Wiley Periodicals, Inc	Article
Save Results	170	12.00	12	N. Noorderhaven	Knowledge-sharing and social interaction within MNEs	2009	Journal of International Business Studies	John Wiley & Sons Int	Article
	167	95.67	13	A. Harzing	Google Scholar, Scopus and the Web of Science: a longitudin...	2016	Scientometrics	Springer	Article
	166	9.17	14	A. Harzing	Who's in charge? An empirical study of executive staffing pra...	2001	Human Resource Management	Wiley Periodicals, Inc	Article
	159	15.90	15	A. Harzing	A google scholar h-index for journals: An alternative metric to...	2009	Journal of The American Society For I...	Wiley	Article
	140	12.73	16	A. Harzing	The language barrier and its implications for HQ-subsidiary re...	2008	Cross Cultural Management: An International Journal	Wiley Periodicals, Inc	Article
	126	7.88	17	A. Harzing	THE ROLE OF CULTURE IN ENTRY-MODE STRATEGIES: FROM NE...	2003	Advances in International Management	JAI	Review
	123	6.47	18	A. Harzing	Cross-national industrial mail surveys: Why do response rates...	2000	Industrial Marketing Management	Elsevier Science Inc	Article
	115	7.87	19	J. Hocking	A knowledge transfer perspective of strategic assignment pur...	2004	International Journal of Human Resource Management	John Wiley & Sons Int	Article

Web of Science search

Authors: harzing a

Years: 0 - 0

Search

Search Direct

Clear All

Revert

New

Results

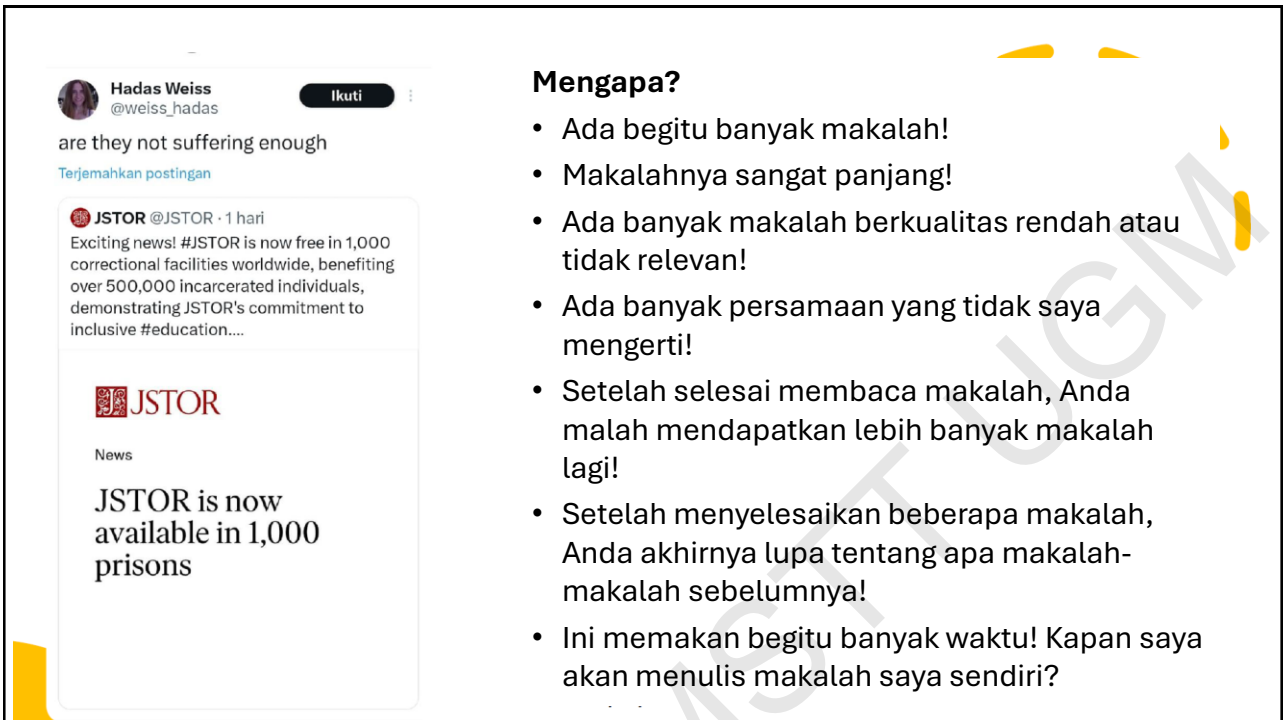
Publication years: 1996-2019	Cites	Per year	Rank	Authors	Title	Year	Publication	Publisher	Type
Citation years: 23 (1996-2019)	374	37.40	1	Nancy J. Adler...	When Knowledge Wins: Transcending the Sense and Nonsense of Ac...	2009	Academy Of Management Learning &...	Acad Management	Article
Papers: 76	221	13.00	2	AW Harzing	Acquisitions versus greenfield investments: International strategy an...	2002	Strategic Management Journal	Wiley-Blackwell	Article
Citations: 3768	206	11.44	3	AW Harzing	Of bears, bumble-bees, and spiders: The role of expatriates in contr...	2001	Journal Of World Business	Elsevier Science Inc	Article
Cites/year: 163.83	171	17.10	4	Anne-Wil Harzin...	A Google Scholar h-index for Journals: An Alternative Metric to Meas...	2009	Journal Of The American Society For L...	Wiley	Article
Authors/paper: 49.58	171	10.69	5	AW Harzing, A. S...	The relative impact of country of origin and universal contingencies...	2003	Organization Studies	Sage Publications Ltd	Article
h-index: 2.79	165	8.68	7	AW Harzing	An empirical analysis and extension of the Bartlett and Ghoshal typol...	2000	Journal Of International Business Stud...	Journal Int Business Stud...	Article
g-index: 81	163	13.58	8	Mariusz Pudielko...	Country-of-origin, localization, or dominance effect? An empirical inv...	2007	Human Resource Management	Wiley Periodicals, Inc	Article
	158	15.80	8	Niels Noorderha...	Knowledge-sharing and social interaction within MNEs	2009	Journal Of International Business Stud...	Palgrave Macmillan Ltd	Article
	151	8.39	9	AW Harzing	Who's in charge? An empirical study of executive staffing practices L...	2001	Human Resource Management	John Wiley & Sons Int	Article
	146	48.67	10	Anne-Wil Harzin...	Google Scholar Science and the Web of Science: a Longitudinal and ...	2016	Scientometrics	Springer	Article

17

Mengapa membaca artikel scientific sulit?



18



Hadas Weiss
@weiss_hadas

are they not suffering enough

Terjemahkan postingan

JSTOR @JSTOR · 1 hari

Exciting news! #JSTOR is now free in 1,000 correctional facilities worldwide, benefiting over 500,000 incarcerated individuals, demonstrating JSTOR's commitment to inclusive #education....

JSTOR

News

JSTOR is now available in 1,000 prisons

Mengapa?

- Ada begitu banyak makalah!
- Makalahnya sangat panjang!
- Ada banyak makalah berkualitas rendah atau tidak relevan!
- Ada banyak persamaan yang tidak saya mengerti!
- Setelah selesai membaca makalah, Anda malah mendapatkan lebih banyak makalah lagi!
- Setelah menyelesaikan beberapa makalah, Anda akhirnya lupa tentang apa makalah-makalah sebelumnya!
- Ini memakan begitu banyak waktu! Kapan saya akan menulis makalah saya sendiri?

19

What about asking AI?



You

How to read scientific paper effectively?

20

1. ****Baca Cepat Makalah Terlebih Dahulu:**** Mulailah dengan membaca cepat makalah untuk mendapatkan pemahaman umum tentang isinya. Lihat abstrak, gambar, keterangan gambar, dan tabel. Tinjauan awal ini membantu Anda memahami temuan utama dan struktur makalah.
2. ****Baca Abstrak dengan Cermat:**** Abstrak memberikan ringkasan tentang pertanyaan penelitian, metode, hasil, dan kesimpulan. Ini memberikan gambaran ringkas tentang apa yang dibahas dalam penelitian dan temuan utamanya.
3. ****Periksa Pendahuluan:**** Pendahuluan menetapkan konteks penelitian, termasuk latar belakang studi, pertanyaan penelitian, dan tujuan. Ini membantu Anda memahami masalah yang dibahas oleh makalah dan mengapa hal tersebut penting.
4. ****Masuki Bagian Metode:**** Bagian ini menjelaskan bagaimana penelitian dilakukan, termasuk desain eksperimen, metode pengumpulan data, dan teknik analisis. Memahami metode sangat penting untuk menilai validitas temuan penelitian.
5. ****Periksa Hasil:**** Bagian hasil menyajikan data yang dikumpulkan dalam penelitian, sering kali dalam bentuk tabel, gambar, dan teks. Perhatikan hasil yang paling relevan dengan pertanyaan penelitian.
6. ****Baca Diskusi dan Kesimpulan:**** Diskusi menginterpretasikan hasil, menjelaskan implikasi, signifikansi, dan bagaimana hasil tersebut sesuai dengan bidang yang lebih luas. Kesimpulan sering kali merangkum temuan utama dan menyarankan arah penelitian masa depan.

21

7. ****Lihat Referensi:**** Referensi dapat memberikan konteks yang lebih luas untuk studi ini, menunjukkan di mana letaknya dalam tubuh pengetahuan yang ada. Referensi juga bisa menjadi sumber yang baik untuk menemukan lebih banyak makalah tentang topik yang Anda minati.
8. ****Catat dan Ringkas:**** Saat Anda membaca, buat catatan tentang poin-poin utama, metode, hasil, dan pemikiran Anda sendiri tentang studi tersebut. Merangkum makalah dengan kata-kata Anda sendiri dapat membantu memperkuat pemahaman Anda.
9. ****Evaluasi Secara Kritis:**** Pertimbangkan keterbatasan studi, seberapa baik data mendukung kesimpulan, dan potensi bias dalam studi. Evaluasi kritis terhadap makalah membantu Anda menilai keandalannya dan relevansinya dengan pekerjaan atau minat Anda.
10. ****Diskusikan dengan Rekan:**** Mendiskusikan makalah dengan kolega atau rekan dapat memberikan wawasan tambahan dan membantu memperjelas konsep yang sulit. Ini juga cara yang bagus untuk terlibat dengan komunitas ilmiah.

22

Mulai dari mana?

- Kita bisa mulai dengan menemukan hanya makalah yang bagus dan relevan!
- Menemukannya akan menghemat banyak waktu Anda!
- Namun, kita masih memiliki begitu banyak makalah! IEEE, Springer, MDPI, Frontiers, dll. Pertanyaannya kemudian: bagaimana cara menemukan makalah yang bagus?

23

Mulai dari Mencari Artikel yang Bagus

- Beberapa indikator: Sitasi, Jurnal berdampak tinggi atau penting, konferensi berdampak tinggi, Sering muncul di mana-mana, Ditulis oleh orang terkenal atau kelompok besar, Disitasi oleh makalah bagus lainnya
- Tidak semua makalah bagus memiliki kualitas ini, tetapi ini dapat digunakan sebagai titik awal.
- Pembimbing Anda, sebagian besar waktu, dapat mengarahkan Anda ke makalah yang tepat.
- Temukan makalah ulasan terbaru dan temukan makalah-makalah kunci dari sana.

24

Setelah Mendapat Artikel yang Bagus, Kemudian Bagaimana?

- Jangan langsung membaca semuanya! Mengapa?
 - Mereka mungkin tidak sepenuhnya terkait dengan bidang Anda!
 - Mereka mungkin memiliki judul yang menyesatkan atau hanya untuk menarik perhatian!
 - Mereka mungkin menggunakan istilah-istilah yang spesifik dalam bidang mereka, berbeda dari apa yang Anda cari!
- Jadi, bagaimana memastikan bahwa makalah tersebut layak untuk dibaca?

25

Abstrak dan Kesimpulan itu penting!



Why abstract?

- Pendek! Ini seperti trailer sebuah film!
- Abstrak yang bagus harus merangkum seluruh makalah!
- Abstrak yang baik harus memuat temuan yang paling menarik!



Why conclusion?

- Juga pendek! Ini seperti epilog sebuah buku!
- Kesimpulan yang baik juga harus merangkum makalah dalam hal hasil yang paling penting!
- Kesimpulan yang baik biasanya menyajikan pekerjaan di masa depan. Kita bisa memeriksa apakah penelitian kita sejalan dengan pekerjaan masa depan.

26

Sebelum membaca makalah lebih lanjut...

- Anda bisa memastikan lebih jauh dengan membaca **Pendahuluan!**
 - Pendahuluan yang baik memberikan konteks masalah. Anda dapat memeriksa apakah masalah tersebut sama dengan yang sedang Anda coba selesaikan!
 - Pendahuluan yang baik memberikan referensi yang bagus! Jika Anda mengenal sebagian besar referensi ini, kemungkinan besar makalah ini memang terkait dengan penelitian Anda!
 - Pendahuluan yang baik menunjukkan kebaruan dari makalah tersebut! Sekali lagi, Anda bisa memastikan apakah hal ini sejalan dengan penelitian Anda!

27

Beberapa langkah praktis untuk membaca makalah:

- Mulailah dengan memahami strukturnya untuk mendapatkan gambaran umum.
- Soroti ide-ide paling penting!
- Anda bisa mulai dengan memahami gambar atau tabel!

28

Tapi... Bagaimana dengan persamaan?

- Jangan panik saat melihat persamaan!
- Ingat: makalah yang baik hanya akan memuat persamaan yang terkait dengan tujuan makalah dan untuk memudahkan Anda memahaminya!
- Jika tidak ada penjelasan, Anda bisa mencatat semua simbol setiap kali simbol baru muncul.
- Jika perlu, Anda juga bisa menuliskan ulang persamaannya di catatan Anda sendiri!
- Selalu kontekstualisasikan persamaan! Jangan mencoba membacanya secara terpisah. Semua persamaan selalu terkait dengan ide yang sedang disajikan!

29

Setelah Anda menyelesaikan membaca makalah, apa selanjutnya?



Cobalah untuk mengingat kontribusi paling penting dari makalah tersebut dalam 1 kalimat.



Beri label/kategori untuk setiap makalah. Misalnya, apakah itu tentang desain atau perencanaan? Apakah hanya menggunakan simulasi atau melakukan eksperimen? Dll.



Buat peta pikiran yang menghubungkan makalah tersebut dengan makalah lainnya. Apakah ini kelanjutan dari karya sebelumnya? Apakah ini menyajikan metode yang lebih baik?



Selalu simpan makalah tersebut di repositori makalah Anda: Zotero, Mendeley, dll.

30

Penggunaan AI (misalnya: Typeset.io)

The screenshot shows the Typeset.io website interface. The main heading is "The Fastest Research Platform Ever" with the subtitle "All-in-one AI tools for students and researchers." A search bar contains the query "bagaimana perbedaan perilaku sebelum dan setelah covid-19?". Below the search bar, there are three suggested questions: "What are the significant changes in consumer behavior observed before and after the COVID-19 pandemic?", "How has the COVID-19 pandemic impacted the psychological well-being of individuals, and what are the long-term effects?", and "What are the key differences in social interaction patterns and community engagement observed before and after the COVID-19 pandemic, and what are the implications for publ...". There is also a tip: "Tip: If you're asking a question, add a question mark (?) at the end to get better results". At the bottom, there are two "Popular Tools" cards: "Chat with PDF" (Get all answers backed by citations.) and "AI Writer" (Use AI suggestions to expand notes to paragraphs.).

31

The screenshot shows the Typeset.io interface displaying the AI-generated answer to the search query. The answer is titled "Answer from top 5 papers" and contains a paragraph about COVID-19's impact on human behavior, followed by two sections: "Perilaku Seksual" and "Perilaku Perjalanan". The "Perilaku Seksual" section mentions a study by Greenberg et al. (2024) showing a decrease in sexual frequency. The "Perilaku Perjalanan" section mentions a decrease in public transport usage. Below the answer, there are filters for "Add columns (1)", "PDF", "Open Access", "Top-tier papers", "More filters", and "Clear filters". The "Papers (10)" section shows a list of papers, with the first one being "1. Mp47-18 the effect of the covid-19 pandemic on female sexual behavior: analysis of the general social survey" by Daniel R. Greenberg et al. The "Insights" section shows a summary of the findings. The "Create or add columns" section offers suggestions like "TLDR", "Conclusions", and "Summarized Abstract".

32

Journal Article | DOI

"I saw a fox in Melbourne CBD": Urban travel behaviour changes during COVID-19 and beyond

Katherine Pawluk De-Toledo, +2 more · 01 Jan 2024 · Transportation Research Part F-Traffic

1 Citations Save

Abstract: An unexpected outcome of the COVID-19 pandemic were the dramatic travel behaviour changes experienced in cities worldwide, which, could result in more sustainable transport systems. Consequently, there is a need for longer-term post-pandemic travel behaviour change research. This study aimed to investigate city-level travel behaviour changes during and post-pandemic. To our knowledge, this is the first qualitative study exploring the permanency of COVID-19 travel behaviour changes. This study involved a literature review of 41 studies and in-depth interviews with 19 transport stakeholders; [read more](#)

High Quality

Explain Abstract of this paper 8:03 AM

Ringkasan Abstrak

- Pandemi COVID-19 menyebabkan perubahan signifikan dalam perilaku perjalanan perkotaan, yang berpotensi menghasilkan sistem transportasi yang lebih berkelanjutan di masa depan [1].
- Studi ini berfokus pada pemahaman perubahan ini selama dan setelah pandemi, menekankan perlunya penelitian jangka panjang tentang perilaku perjalanan pasca-pandemi [1].
- Ini adalah studi kualitatif pertama yang mengeksplorasi keabadian perubahan ini, yang melibatkan tinjauan literatur dari 41 studi dan wawancara dengan 19 pemangku kepentingan transportasi di Melbourne, Australia, yang dikenal sebagai kota paling terkunci secara global [1].
- Temuan utama meliputi:
- Peningkatan signifikan dalam bekerja dari

Explain Abstract of this paper, Conclusions +12 more

Ask any question...

Chat with Paper

- Explain Abstract of this paper
- Conclusions from the paper
- Results of the paper
- Methods used in this paper
- Summarise introduction of this paper
- What are the contributions of this paper

Show more

33

TERIMA KASIH

34